



COMFORT AND DURABILITY

BACKLIT IGNITE | WHITE
KEYBOARD | GTI-28201B

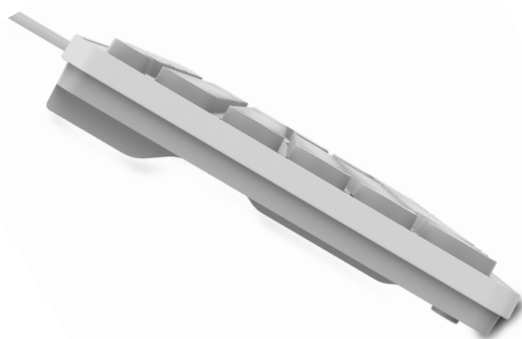


Features

The Backlit Ignite white keyboard has 105 membrane keys with multimedia functions, backlit, cable and USB connection for impeccable performance, designed with high quality materials for long durability and comfort.

Size

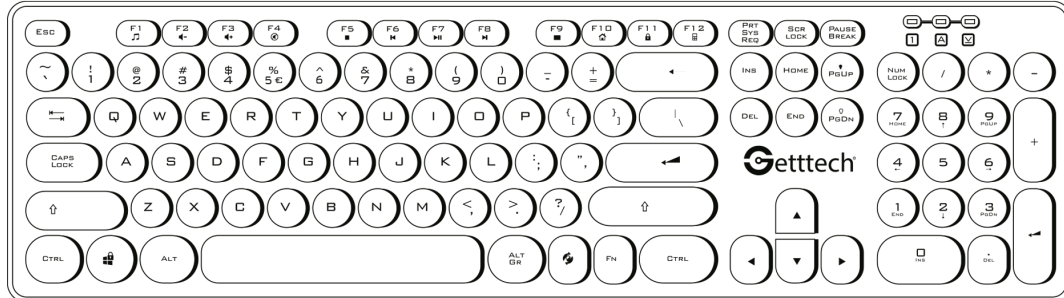
The keyboard has an ideal measurement of 17.60in x 5in x 1in and a weight of 385g. for better performance, comfort and aesthetics.



Keyboard Lighting and Effects

Backlight keyboard with multimedia functions, perfect to make the keys visible in low light environments.





Model	GTI-28201B
Specifications	
Size	17.59 in x 4.97 in x 0.98 in
Weight	385±5g
Mechanical Features	
Keyboard key operation force:	70±10 gf
Resistance	≥16g
Characteristics	
Working voltage	DC 5V
Working current	80mAh
Suitable Environment	
Temperature	-15°C ~ 60°C
Humidity	50±5%RH
Parameters	
Key timelife	1'000,000 cicles
Packaging	
Packing size (color box)	18.11 in x 5.70 in x 1.37 in
Packing dimensions (master carton) (20pcs per carton)	18.89 in x 14.44 in x 12.20 in
Weight with packing	25.79 lbs.
EAN-13	7503028761364